

# The Formulation of Regional Innovation Strategy: A case study of Banska Bystrica region, Slovakia

Zuzana Sarvašová<sup>1</sup>, Jaroslav Šálka<sup>2</sup>, Zuzana  
Dobšinská<sup>2</sup>

*<sup>1</sup>National Forest Centre - Forest Research Institute  
Zvolen*

*<sup>2</sup>Technical University Zvolen, Faculty of Forestry*

# Banska Bystrica Self Governing Region



# Profile of Banska Bystrica Region



- **Area:** 9 455 km<sup>2</sup>
- **Population:** 653 697
- **Economically active population:** 313 502
- **Population density:** 69. 81 persons per km<sup>2</sup>
- **Capital:** Banska Bystrica
- **Districts:** 13
- **Towns & municipalities:** 24 & 516

# Industrial Sectors



## Industry

metallurgy, engineering, wood-processing, chemical and pharmaceutical industry, glass and ceramic industry, food-processing, ICT and tourism

- is unevenly distributed – concentrated to the north
- dominating is metallurgy (40 % of export)
- southern part is agricultural
- important silicate and magnesite deposits in southern and south-eastern parts

## Agriculture and Forestry

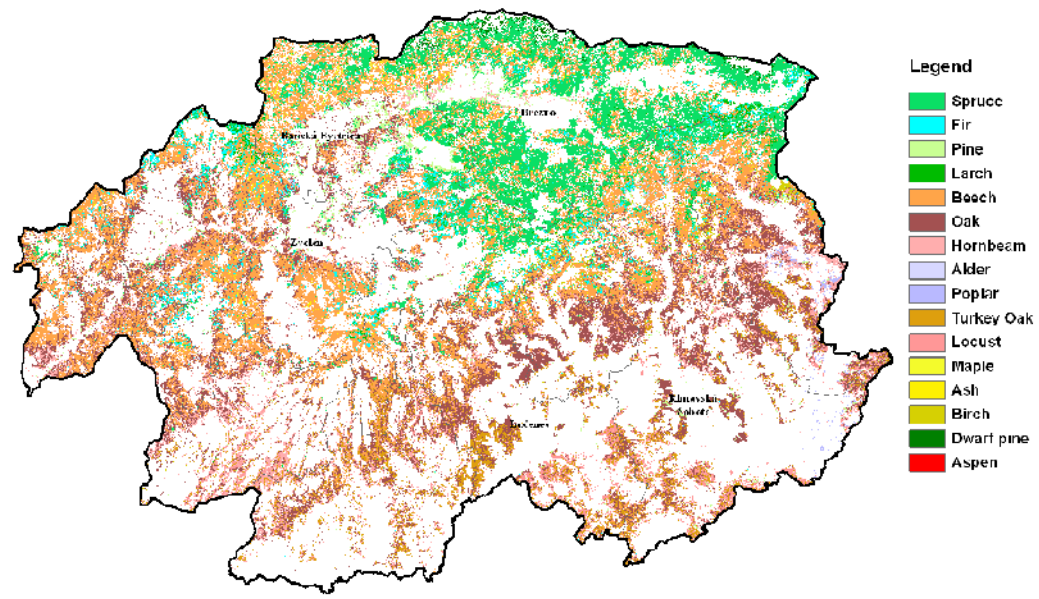
- forests - 49% of the area
- agricultural land - 44 % of the area

## Tourism

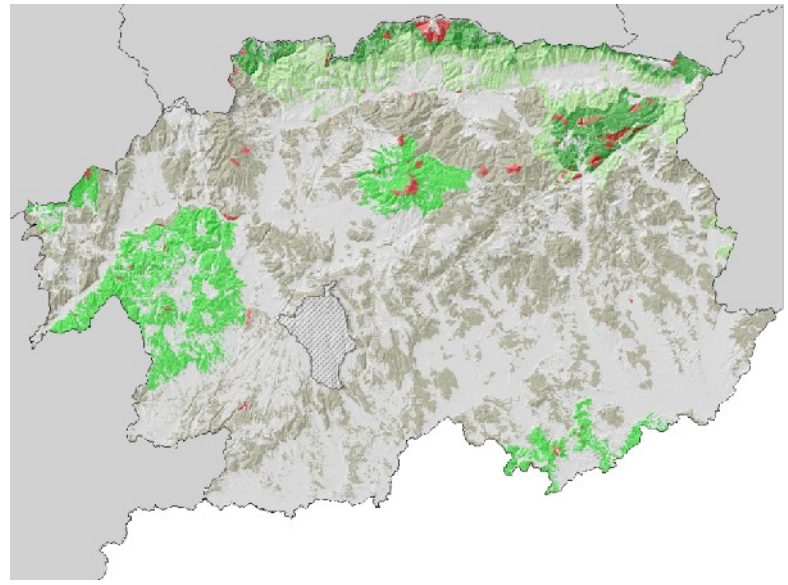
- Winter Tourism
- Summer Mountain & Water Tourism
- Urban & Cultural Tourism
- Spa & Health Tourism
- Country & Agro Tourism

# Natural resources – Forestry

Tree species composition



Forests in the protected areas

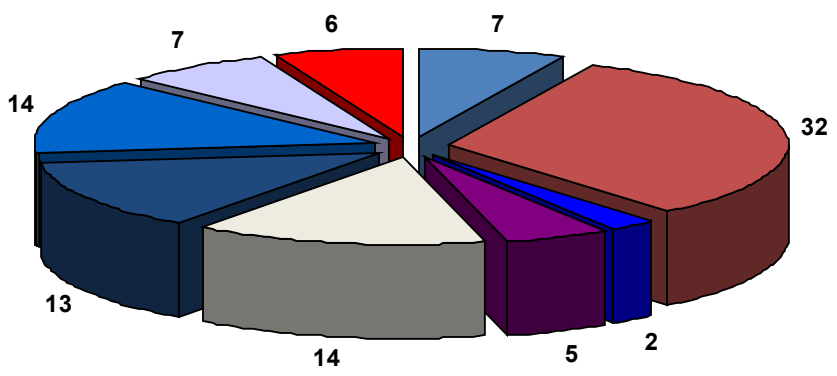


According to the NFIM SR, the current growing stock in the forests of Banská Bystrica region is  $173,9 \pm 10,7$  mil.  $m^3$  of timber in total tree volume  
 Actual felling in the region is nearly 2.1 million.  $m^3$ , share of incidental felling on a total felling is up to 63%  
 Growing stock in forests of Banská Bystrica region is increasing and reached almost 109 mil.  $m^3$  in 2009



# Human resources

## Employment rate in %



- agriculture
- building industry
- transport
- education
- others
- industry
- wholesale and retail
- public administration
- public health

- Forests of the Slovak Republic s.e. Banská Bystrica Directorate was established in 1871 - in its current form since 1999
- Technical University in Zvolen:
  - Faculty of Forestry (first notice in 1807)
  - Faculty of wood science and technology
- NFC based in Zvolen:
  - Forest Research Institute roots in 1898
  - Institute for Forest Consulting and Education
  - Institute for Forest Resources and Information
  - Forest Management Planning Institute
- Military Forests and Estates, s.e.
- Secondary forestry school in Banská Štiavnica was established in 1919



# Innovation status

- Innovations represent one of the main tools of establishing the knowledge based economy which is a basic pre-requisite for achieving the Lisbon Strategy objectives not only at the national but also at the regional level.
- According to Regional innovation performance 2006 was Middle Slovakia with 0.27 RRSII (Revealed Regional Summary Innovation Index) at 167th place from 203 evaluated NUTS II regions in EU.
- Advanced European regions for which the support of research, development and innovations belongs to the key priorities provides the experience of Regional innovation systems

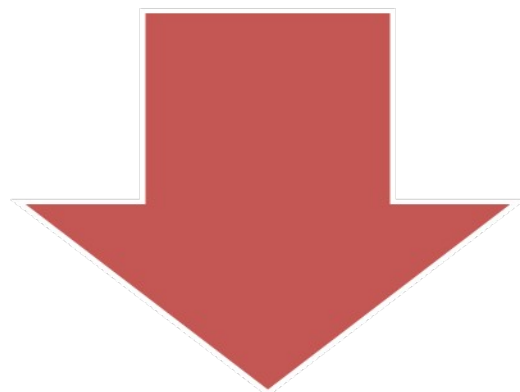
# Main Strategic Documents of BB region

- **Programme of economic, social and culture development 2007 – 2013**
- *Development strategies for Innovation, Tourism and Culture, Transport, Education, Health and Social System, inc. Investor Attracting Strategy*
- **Banska Bystrica Regional Innovation Strategy (BaByRIS)**

***Innovation Policy*** - Support of innovation by regional government, building of human resources for innovation, cooperation in innovation - support of partnerships, networks and clusters, support of international cooperation and mobility, support of innovative companies, building the regional innovation infrastructure – Regional Innovation Centre



# Theory



## Top down

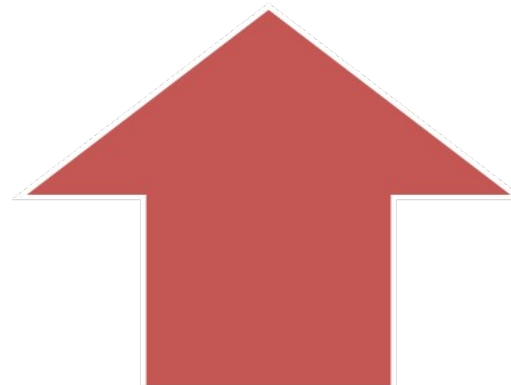
European and national innovation policies have very different impacts across the regions

Regional innovation policies have to accommodate top-down programmes and funds into their policy frameworks



## Bottom up

Regional innovation policies have to solve issues of integration and coordination of an often disparate set of private sector firms and public institutions and agencies



# Regional Innovation Strategy - BaByRIS



- BaByRIS has been worked out in the sense of the EU philosophy under the 6FP project for Research, Technology development and Demonstrations
- Duration: 32 months since June 2005
- Partners: Region of Abruzzo, Region of Southern Estonia, Nitra Self-governing Region
- In the year 2008 was BaBy RIS published

# Formulation process



- **Phase 0: CONSENSUS BUILDING UP**

Achieving the consensus between those involved in the regional and innovation development, establishing the coordinated cooperation with the project partners, specifying the project goals and the preparation of the detailed working plan

- **Phase 1: ANALYSES OF INNOVATION POTENTIAL**

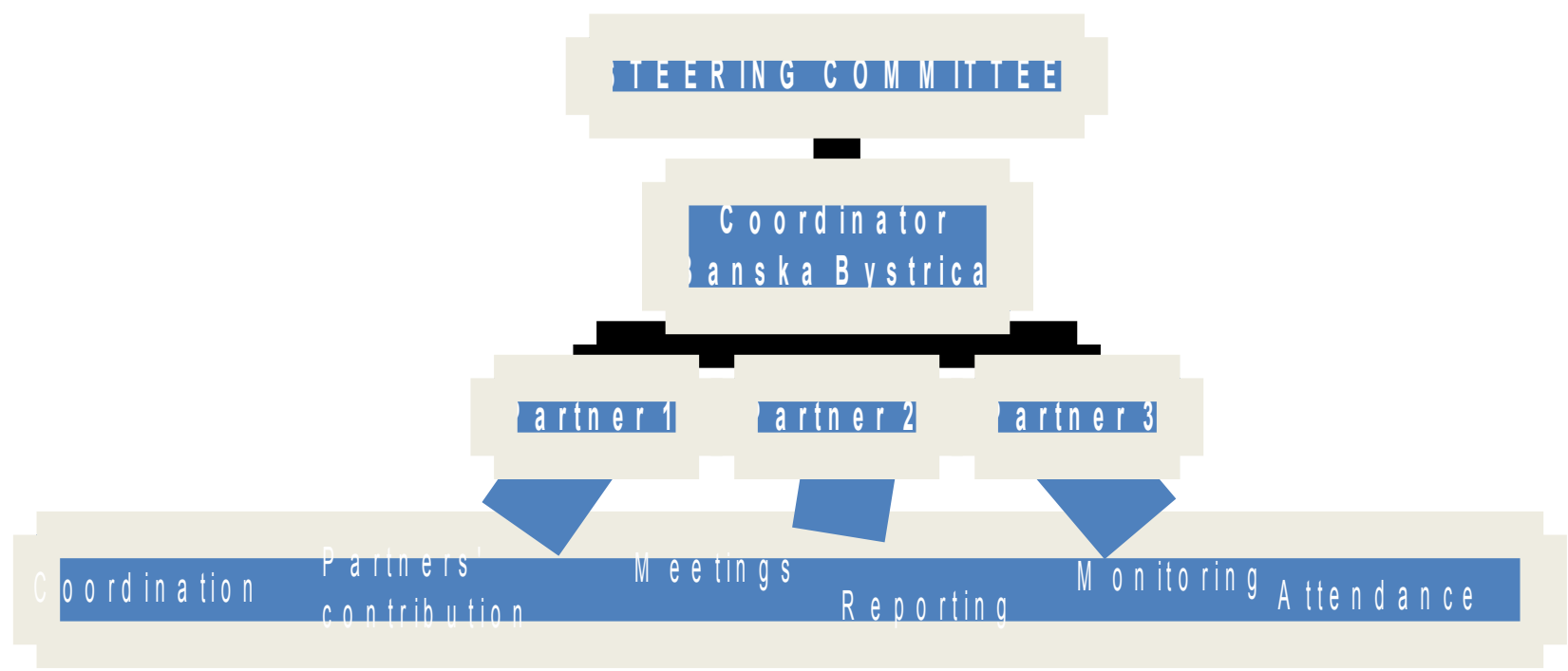
SMEs innovation needs, an analysis of services and institutions for supporting and financing the innovations, an analysis of a technological offer, SWOT and STEP analysis, identification of shortcomings, barriers and factors of the knowledge based economy development in the region

- **Phase 2: DEFINITION OF PRIORITIES AND ACTION PLAN**

Draft of strategic fields of the Regional Innovation Strategy, formulation of the Action plan and a set of pilot activities, monitoring and evaluation system



# Organizational Structure



# Steering committee



- represent project in specific areas of their activities,
- decide political and strategic objectives and orientation of the project,
- represent political and institutional support,
- facilitate achievement of regional consensus among key institutions,
- evaluate achievement and strategy heading,
- prepare intentions for international collaboration in the field of innovation development.
- 19 Members: *Self-Governing Region Governor, universities, Industrial Property Office, Slovak Legal Metrology, National Forest Centre, Association of Wood Processors, Communication Research Institute, BIC, Expert for entrepreneurial loans, Centre of Creativity and Innovation, IQM, Ltd., Hriňová, Regional Chamber of SCCI, Biotika, Ltd. Slovenská Ľupča, IPM ENGINEERING, Ltd.,*

# Project management



- operatively managed the Regional Innovation Strategy preparation course, followed and evaluated the course of the project, coordinated its priorities and measures with other strategic concepts and documents of the Banska Bystrica Region and by means of the coordinator it communicated with the European Commission which financially supported the project
- Members: *project coordinator, project team, regional partners + Technical assistance GmbH company*



# Expert groups

For building the regional consensus at the following tasks:

- assessment and commenting the preliminary results of analyses,
- analyses results evaluation and recommendations for the development strategy,
- working out of specific parts of the Regional Innovation Strategy,
- drafts of priorities, measures and possible pilot activities on the basis of the analyses results.

The expert groups were thematically focused on 5 fields:

1. building up the **innovation awareness** in the region,
2. management of **human resources** for research, development and the innovation development,
3. **cooperation** among science, research, development and industry,
4. **financing** of research, development and innovation development and **legislative system**,
5. **infrastructure** for support of research, development and the innovation development

# Representatives in expert groups



- Universities and RD institutions
- public administration central bodies
- Entrepreneurial sphere
- Supporting organizations for entrepreneurs
- Corporative and professional unions
- Third sector
- Self-government representatives
- Bank sector





# Participation from forestry sector

*Steering committee:*

- Rector, TU Zvolen*
- Director, National Forest Centre*
- President, Association of Wood Processors*

**19/3**

*Experts groups:*

- 2 assoc. prof., Faculty of Wood – TU Zvolen*
- (with background in forestry and wood science )*

**31/2 + (2)**

# Outcomes and benefits



Based on SWOT:

- 5 priorities:
  - Innovation policy and culture – 3
  - Human resources for innovation – 3
  - Cooperation in innovation development – 3
  - Support of innovative companies – 5
  - Regional structure for innovation – 2
- 71 activities, no clear responsibilities, without financing

**Very important contacts were established**

**BaByRIS is a frame for further projects**

# Results



**Top down**

The formulation of BaByRIS shows signs of different actors' participation

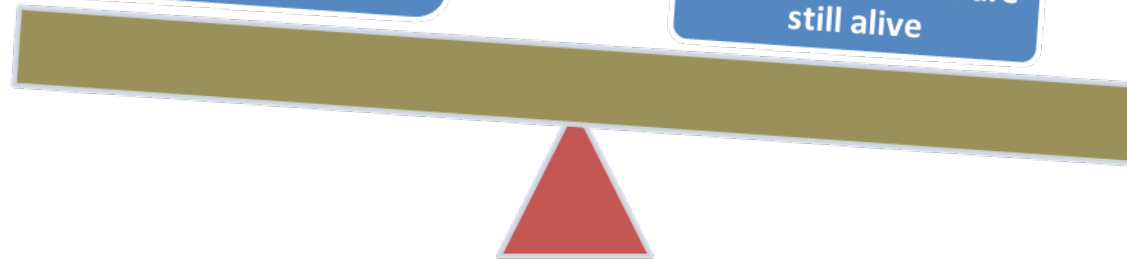
The implementation actions and next steps of BaByRIS are not visible

**Bottom up**

Next common initiatives among regional authorities, universities RD institutions and forest base enterprises are planned

Two FP7 projects are ongoing

Cluster initiatives are still alive





# Conclusions

The final forms of strategic documents which are approved by public administration are usually formulated by hierarchy - top down



that causes problems for policy implementation

The formulation of BaByRIS was creating :

1. Potential – Regional resources
2. Decision – Regional stakeholders



bottom up formulation

permanent political changes  
lack of financial resources



**Thank you for your  
attention!**

This contribution is the result of the project implementation: Centre of Excellence „Adaptive Forest Ecosystems“, ITMS: 26220120006, supported by the Research & Development Operational Programme funded by the ERDF